



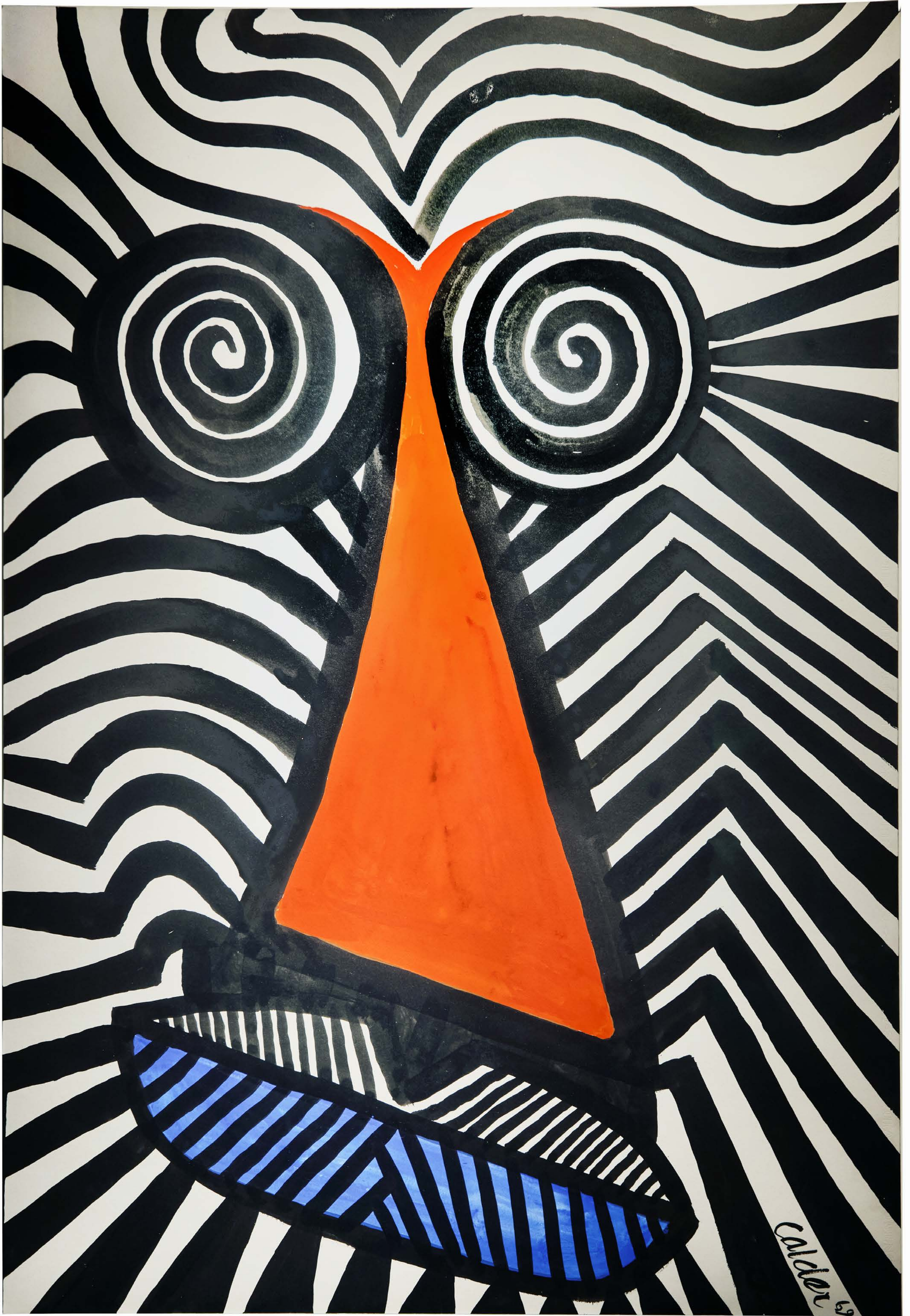
Art Paris
Booth B12
04 – 07 April 2024

OPERA GALLERY



Featuring

Alexander Calder
André Lanskoy
Pierre Soulages
Jean-Michel Atlan
Juan Genovés
Antonio Saura
Niki de Saint Phalle
Fernando Botero
Manolo Valdés
Chun Kwang-Young
Cho Sung-Hee
Fred Eerdekens
Jean Charles Blais
Keith Haring
Julian Opie
Feng Xiao-Min
Jae Ko
Andy Denzler
Pieter Obels
Golnaz Fathi
Amoako Boafo



Alexander CALDER
(1898-1976)

Autre longue figure
1969

Gouache on Canson paper
Signed and dated 'calder 69' on the lower
right
109 x 74 cm | 42.9 x 29.1 in

PROVENANCE

Galerie Maeght, Paris, France
Private collection, New York, USA, 1969
Park East Synagogue, New York, New York Annual Art
Fair (curated by Donna Schneier)
Sylvia Turner Mook collection, New York, USA,
1969-1970
Private collection, Bedford, USA, 1982

This work is registered in the archives of the Calder
Foundation



André LANSKOY
(1902-1976)

Le Drapeau de la guerre déchiré
1959

Oil on canvas
Signed 'lanskoy' on the lower right
146 x 97 cm | 15.7 x 38.2 in

PROVENANCE
Galerie Louis Carré, Paris, France
Albert Løeb Gallery, New York, USA
Briest Scp, Paris, 15 December 1999, lot 67
Private collection



Pierre SOULAGES
(1919-2022)

Gouache vinylique sur papier 1973-41
1973

Vinyl gouache on paper, laid on wood
Signed 'soulages' on the lower right
64,6 x 50 cm | 25.4 x 19.7 in

PROVENANCE
Private collection, Paris, France

CERTIFICATE
The artist has confirmed the authenticity of this work



Pierre SOULAGES
(1919-2022)

Peinture 263 x 181 cm, 2 juillet 2012
(triptych)
2012

Acrylic on canvas
Signed, titled and dated on the reverse
263 x 181 cm | 103.5 x 71.3 in

PROVENANCE

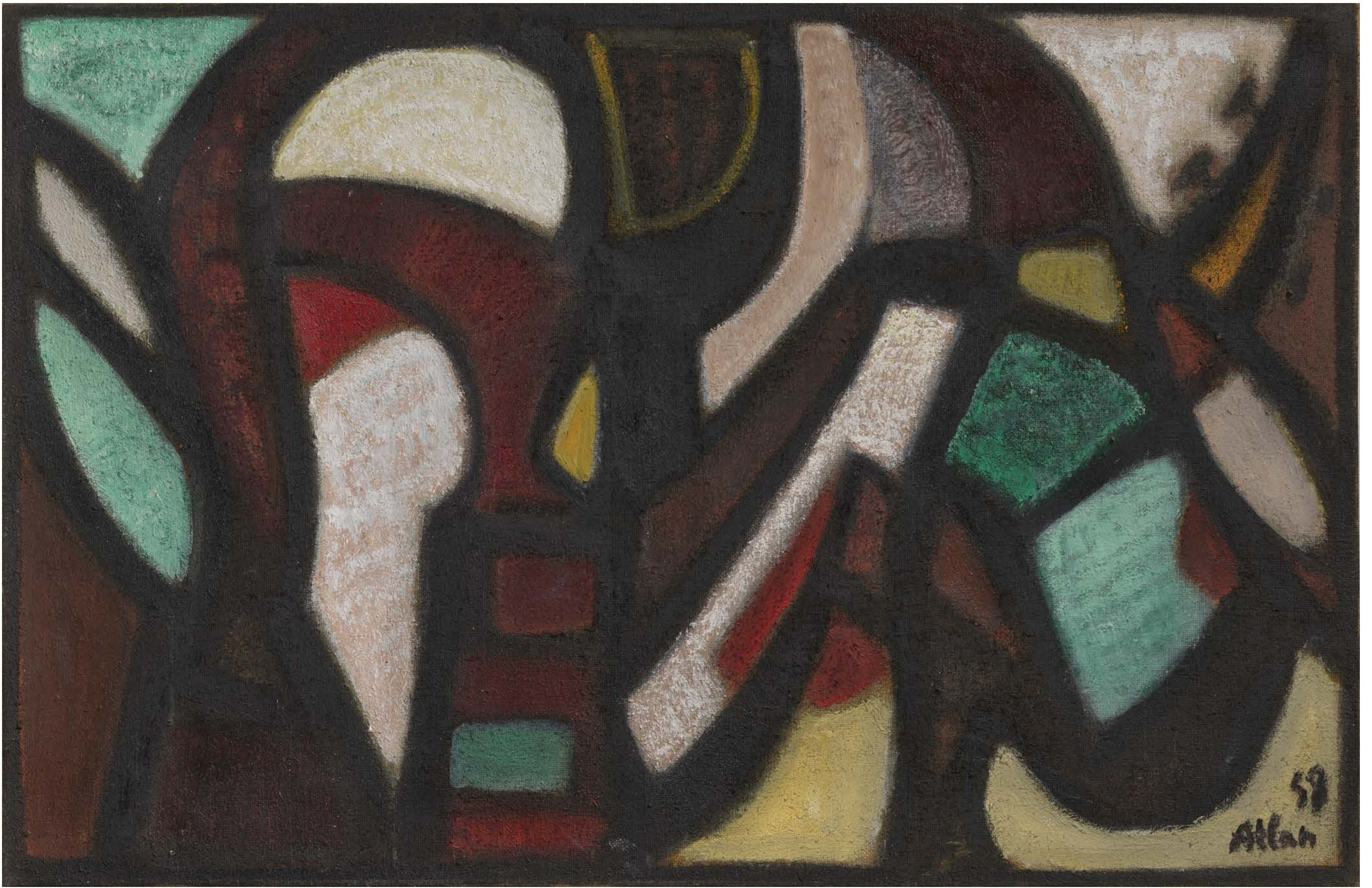
Dominique Lévy/Perrotin, New York, USA, 2013
Private collection, Hong Kong, 2014

EXHIBITED

Rome, Villa Médicis, Académie de France; Lyon,
Musée des Beaux-Arts, 'Soulages XXIe siècle', 2
March–16 June 2013, exh. cat., ill.
New York, Perrotin, 'Pierre Soulages New
Paintings', 24 April– 27 June 2014, exh. cat., ill.

LITERATURE

Pierre Encrevé, *Soulages, L'oeuvre complet -
Peintures, Tome IV - 1997-2013*, Gallimard, Paris,
2015, No. 1527, ill. p. 391



Jean-Michel ATLAN *Danse Chaldéenne*
(1913-1960) 1958

Oil on canvas
Signed and dated 'Atlan 58' on the lower right;
signed again, titled and dated "DANSE
CHALDÉENE" ATLAN 58' on the stretcher
59,8 x 92,1 cm | 23.5 x 36.3 in

PROVENANCE
Artist's studio
Alexander and Stella Margulies collection, London,
UK, 1960s
Private collection, London, UK, by descent

EXHIBITED
Paris, Musée National d'Art Moderne, 'Atlan', 22
January-17 March 1963, exh. cat., No. 82, n.p.

LITERATURE
Jacques Polieri, Atlan, *Catalogue Raisonné of the
Complete Works*, Gallimard, Paris, 1996, No. 523, ill.
in colour p. 313



Juan GENOVÉS
(1930–2020)

Pulsiones
2020

PROVENANCE
Estate of the artist

Acrylic on board
Signed and dated 'genovés / 20' on the lower
right
180 x 140 cm | 70.9 x 55.1 in



Antonio SAURA
(1930–1998)

Portrait
1996

Oil on canvas
Signed and dated 'Saura / 96' on the upper right
73 x 59,5 cm | 28.7 x 23.4 in

PROVENANCE
Private collection

CERTIFICATE
The Archives Antonio Saura has confirmed the
authenticity of this work



**Niki
DE SAINT PHALLE**
(1930–2022)

Running Nana
1966

Painted papier-mâché
Unique piece
71 x 72,5 x 39 cm | 28 x 28.5 x 15.4 in

PROVENANCE
Galerie Bonnier, Geneva, Switzerland
Dagny and Jan Runnqvist collection, Geneva,
Switzerland
Christie's Paris, 2 December 2014, lot 1
Private collection

EXHIBITED
Nice, Musée d'Art Moderne et Contemporain, 'Niki
de Saint Phalle : la donation', 17 March–27 October
2002

LITERATURE
Pierre Restany, Pontus Hultén and Denys Rioult,
*Niki de Saint Phalle : la donation, Nice : Musée d'art
moderne et d'art contemporain*, G. Naef,
Geneva, 2002, ill. in colour p. 220

CERTIFICATE
The Niki Charitable Art Foundation has confirmed
the authenticity of this work



Fernando BOTERO
(1932–2022)

Circus People
2008

Oil on canvas
Signed and dated 'Botero 08' on the lower right
132 x 109 cm | 52 x 42.9 in

PROVENANCE
Artist's studio
Galerie Gmurzynska, Zug, Switzerland
Private collection

CERTIFICATE
The artist has confirmed the authenticity of this work



Manolo VALDÉS
(b. 1942)

Rostro Bicolor Rosa Sobre Amarillo
2006

PROVENANCE
M&L Art Corporation, Nassau, Bahamas
Private collection

Oil, burlap collage and thread on burlap
Signed 'M. Valdes' on the reverse
173,7 x 141 cm | 68.4 x 55.5 in



Manolo VALDÉS
(b. 1942)

Alabastro con Colores
2019

PROVENANCE
Artist's studio

Alabaster, resin and steel
Unique piece
Signed with initials 'M.V.' on the back of the head
106,7 x 104,1 x 40,6 cm | 42 x 41 x 16 in



Manolo VALDÉS
(b. 1942)

Blue Iris II
2021

PROVENANCE
Artist's studio

Polychromated bronze
Edition: 2/8
Signed with initials and numbered 'M.V., 2/8' on
the back of the base
53 x 28 x 18 cm | 20.9 x 11 x 7.1 in



Manolo VALDÉS
(b. 1942)

Reina Mariana
2012

PROVENANCE
Artist's studio

Aluminium
Edition: 4/8
Signed and numbered 'M.V. 4/8' on the back of
the base
164 x 120 x 87 cm | 64.6 x 47.2 x 34.3 in

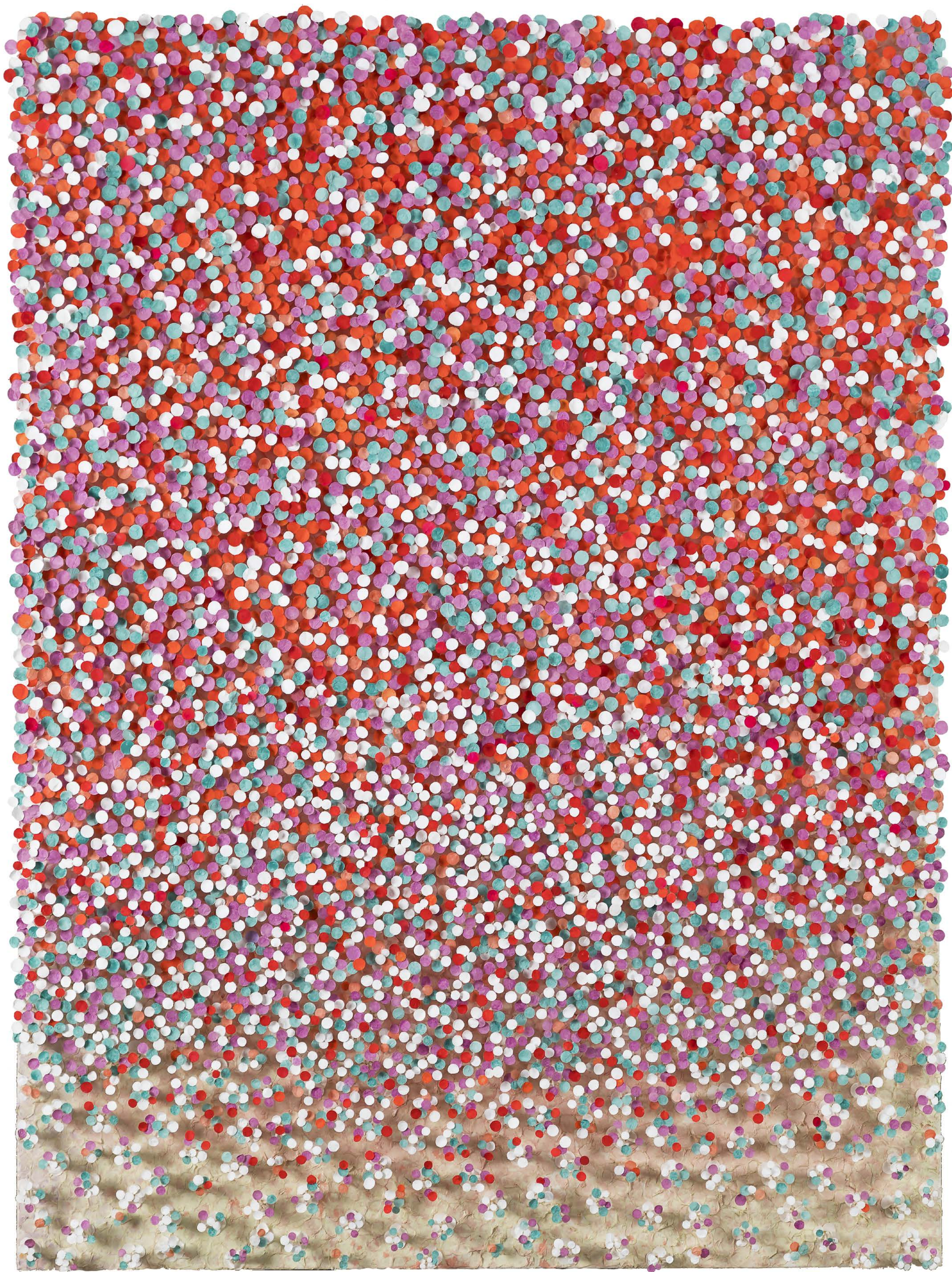


CHUN Kwang-Young *Aggregation 16-DE112*
(b. 1944) 2016

Mixed media with Korean mulberry paper
Signed on the reverse
195 x 131 cm | 76.8 x 51.6 in

PROVENANCE
Artist's studio

CERTIFICATE
The artist has confirmed the authenticity of this work



CHO Sung-Hee
(b. 1949)

Lovely Blossom
2021

PROVENANCE
Artist's studio

Hanji collage and oil on canvas
Signed, titled and dated 'Sung hee CHO / Lovely
Blossom / 2021' on the reverse
130 x 97 cm | 51.2 x 38.2 in

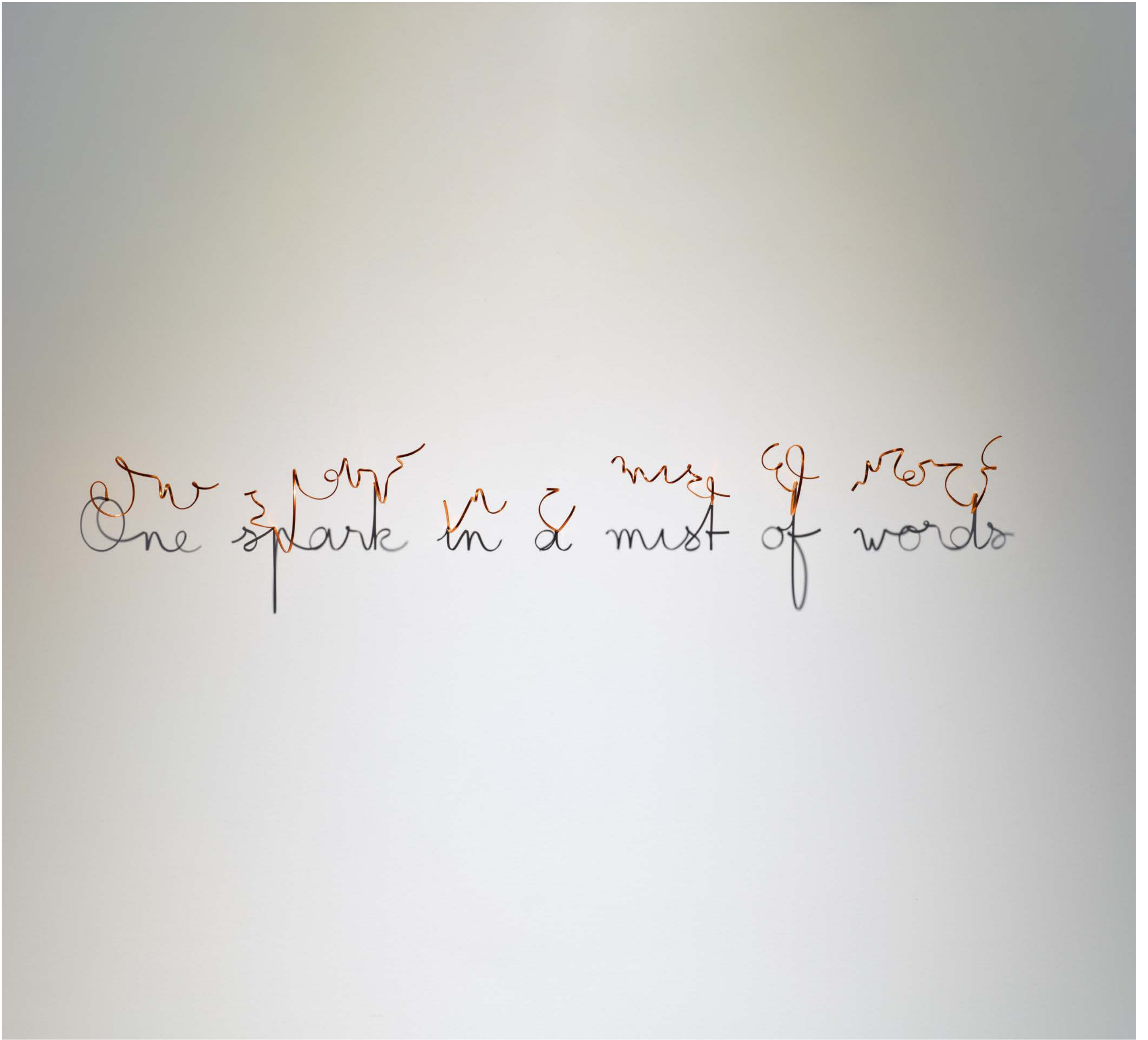


Fred EERDEKENS
(b. 1951)

Really
2023

Copper
Unique piece
77 x 15 x 15 cm | 30.3 x 5.9 x 5.9 in

PROVENANCE
Artist's studio



Fred EERDEKENS
(b. 1951)

One Spark in a Mist of Words
2024

PROVENANCE
Artist's studio

Copper
Unique piece
15 x 84 x 15 cm | 5.9 x 31.1 x 5.9 in



Jean Charles BLAIS *Enrêve*
(b. 1956) 2022

PROVENANCE
Artist's studio

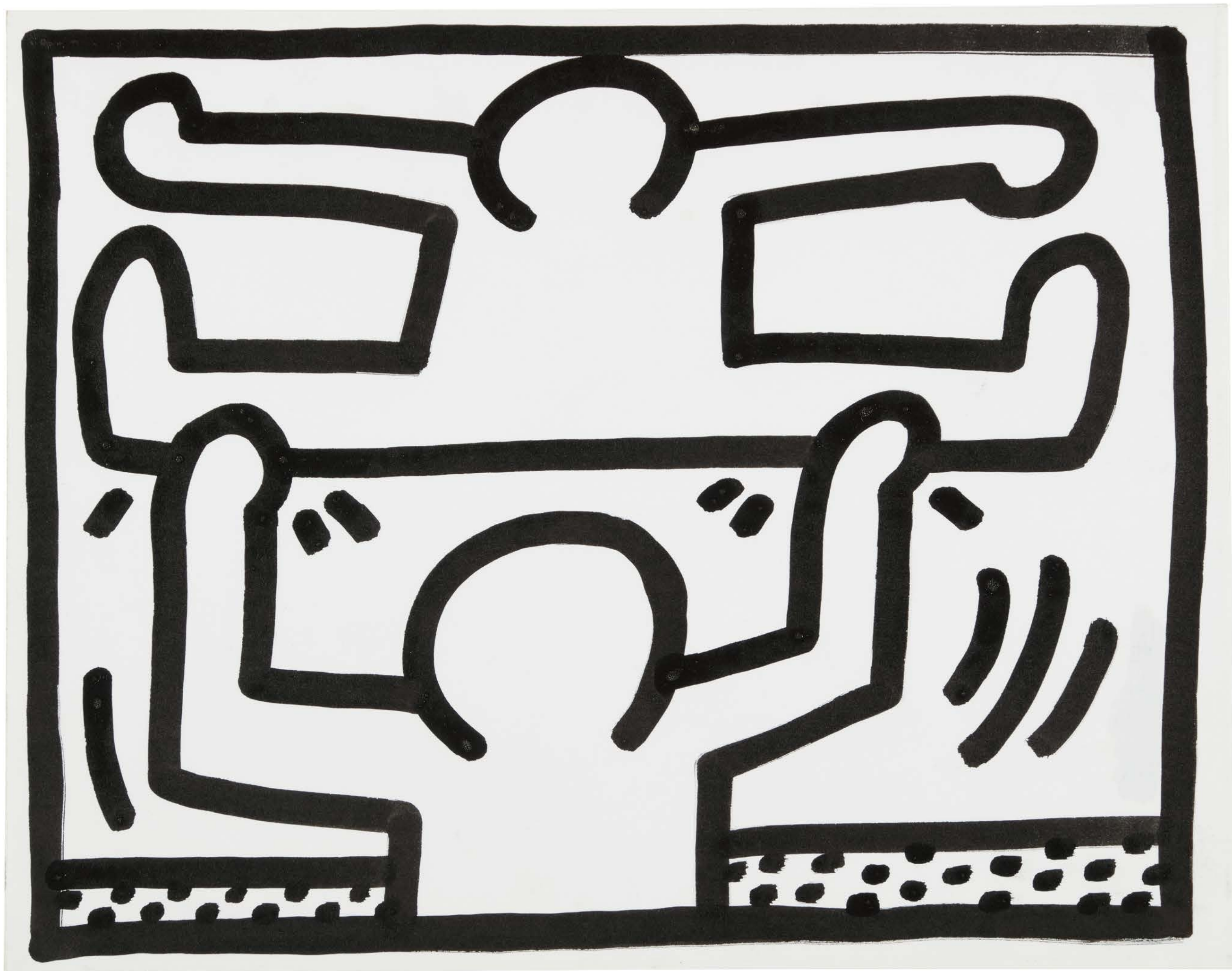
Oil and charcoal on torn posters
120 x 116 cm | 47.2 x 45.7 in



Jean Charles BLAIS *Bleu*
(b. 1956) 2023

PROVENANCE
Artist's studio

Oil, chalk, pencil and charcoal on torn posters
Signed with initials and dated 'JCB 23' on the
upper left
116 x 155 cm | 45.7 x 61 in



Keith HARING
(1958-1990)

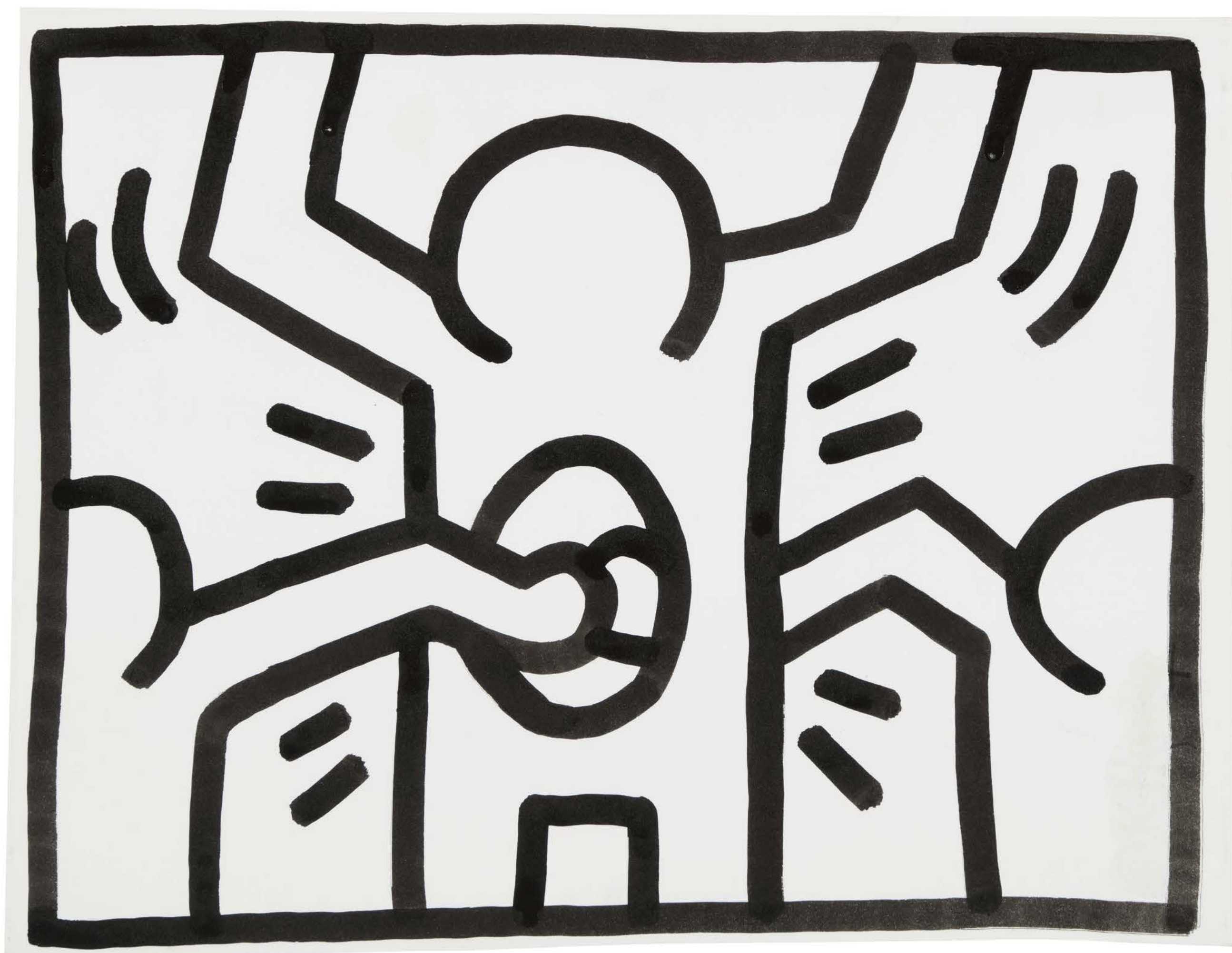
Untitled (Pop Shop Drawings)
1985

Sumi ink on paper
Dated and signed 'SEPT. 4-85 K. Haring' on the
reverse
27,9 x 35,6 cm | 11 x 14 in

PROVENANCE
Artist's studio
Private collection
Private collection, circa 1990

LITERATURE
Dieter Buchhart (Ed.), *Keith Haring-Jean-Michel
Basquiat: Crossing Lines*, Princeton University Press,
Princeton, 2022, ill. in colour p. 183

CERTIFICATE
The Authentication Committee of the Estate of Keith
Haring has confirmed the authenticity of this work



Keith HARING
(1958-1990)

Untitled (Pop Shop Drawings)
1985

Sumi ink on paper
Dated and signed 'SEPT. 4-85 K. Haring' on the
reverse
27,9 x 35,6 cm | 11 x 14 in

PROVENANCE
Artist's studio
Private collection
Private collection, circa 1990

LITERATURE
Dieter Buchhart (Ed.), *Keith Haring-Jean-Michel
Basquiat: Crossing Lines*, Princeton University Press,
Princeton, 2022, ill. in colour p. 182

CERTIFICATE
The Authentication Committee of the Estate of Keith
Haring has confirmed the authenticity of this work



Julian OPIE
(b. 1958)

Pony tail.
2018

PROVENANCE
Artist's studio

Cut acrylic inlaid and overlaid on acrylic panel
Unique piece
Signed on the reverse
220 x 121,6 cm | 86.6 x 47.9 in



FENG Xiao-Min
(b. 1959)

Composition n°26.11.20
2020

PROVENANCE
Artist's studio

Acrylic on canvas
Signed 'xiao min' on the reverse on the lower
right
130 x 195 cm | 51.2 x 76.8 in



Jae KO
(b. 1961)

JK2160 Red and Indian Yellow
2022

PROVENANCE
Artist's studio

Rolled paper and pigmented ink
Signed on the reverse
104 x 65 x 14 cm | 40.9 x 25.6 x 5.5 in



Andy DENZLER
(b. 1965)

Study for There Will be Light
2022

PROVENANCE
Artist's studio

Oil on paper
57 x 76 cm | 22.4 x 29.9 in



Andy DENZLER
(b. 1965)

Woman in Olive Shirt Reflecting
2023

PROVENANCE
Artist's studio

Oil on canvas
Signed on the reverse
120 x 140 cm | 47.2 x 55.1 in



Pieter OBELS
(b. 1968)

Glimpse of Us
2024

PROVENANCE
Artist's studio

Corten steel
Unique piece
155 x 130 x 285 cm | 61x 51.2 x 112.2 in



Golnaz FATHI
(b. 1972)

A New Dream is Born
2023

PROVENANCE
Artist's studio

Acrylic on canvas
Signed and dated 'GOLNAZ FATHI 2023' on the
lower part
160 x 120 cm | 63 x 47.2 in



Amoako BOAFO
(b. 1984)

Laced Fingers
2022

PROVENANCE
Artist's studio

Oil on canvas
Signed and dated '2022' below the right hand
120 x 100 cm | 47.2 x 39.4 in

OPERA GALLERY

Opera Gallery at Art Paris 2024

Stand B12

04 - 07 April 2024

Grand Palais Éphémère

Place Joffre, 75007 Paris

Opera Gallery Paris

62 rue du Faubourg Saint-Honoré, 75008 Paris

paris@operagallery.com

T +33 (0)1 42 96 39 00

General Admission

Thursday 4 April 2024: 12pm – 8pm

Friday 5 April 2024: 12pm – 9pm

Saturday 6 April 2024: 12pm – 8pm

Sunday 7 April 2024: 12pm – 7pm

operagallery.com